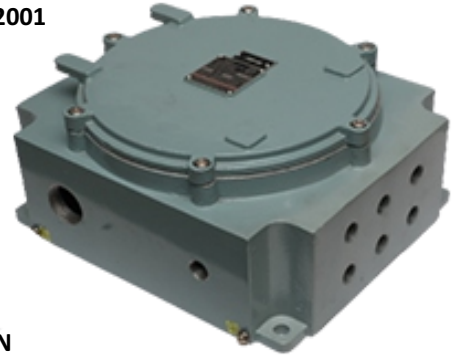




DATA SHEET FOR FLP JUNCTION BOX

TECHNICAL DATA:

PRODUCT	:	CAT. NO.- RCP/215
ENCLOSURE	:	FLAME PROOF (EX-d), Gas Group IIA & IIB As per IS/IEC 60079-1: 2014
PROTECTION	:	WEATHER PROOF IP – 66 AS PER IS/IEC 60529:2001 (Reaffirmed 2014)
AREA CLASSIFICATION	:	Ex db IIA,IIB T6 Gb(EX tb/tc IIIC T85 C Db/Dc (ZONE 1&2& Zone 21 & 22)
CERTIFICATION	:	CIMFR, BIS, PESO
TEMPERATURE CLASS	:	T 6
MATERIAL	:	DIE CAST ALUMINIUM ALLOY
FINISH	:	EPOXY POWDER COATED SHADE AS PER IS : 5
EARTHING	:	1 No INTERNAL & 2 No's EXTERNAL
HARDWARE	:	STAINLESS STEEL
GASKET	:	'O' RING ENDLESS GASKET NEOPRENE / SILICON
NAME PLATE	:	SS NAME PLATE CUM WARNING PLATE
ENTRIES	:	AS PER CUSTOMER REQRMENT
TERMINAL	:	COMBINATION AS PER CUSTOMER REQUIREMENT
VOLTAGE	:	415 V AC

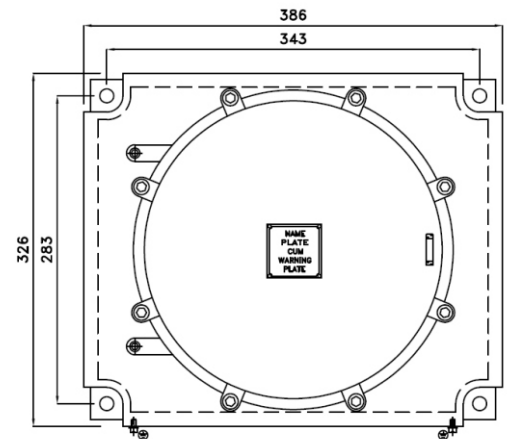


OPTIONS

SR.NO	PARTICULAR	OPTIONS
1.	MATERIAL OF CONSTRUCTION	STAINLESS STEEL
2.	GLAND/PLUG	BRASS / SS / ALUMINIUM
3.	COLOUR SHADE	631, 632, 355, 7031, 7032 etc.
4.	CANOPY	G.I / FRP
5.	INTERNAL COMPONENTS	CU./AL. BUSBAR

SELECTION CHART

SR NO	INTERNAL SIZE	TERMINAL (2.5 sq mm) (MAX)	MODEL TYPE
1.	300mm X 360mm X 110mm To 250 mm	60 Nos	B1
2.	300mm X 325mm X 110mm To 250 mm	48 Nos	B2
3.	300mm X 250mm X 110mm To 250 mm	40 Nos	B3
4.	250mm X 200mm X 110mm To 250 mm	24 Nos	B4



FRONT VIEW